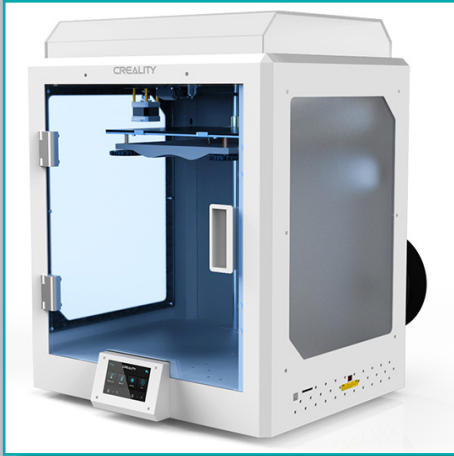


NEO CRUCIBLE

3D Printers for Industry

Print Volume
25,650 cm³



Creality CR-5 Pro H Industrial Grade FDM 3D Printer

Industrial Grade Material Capabilities

- Fully Enclosed for Temperature Stability
- Max Hotbed Temperature: 110°C (230°F)
- High Temperature Nozzle: **300°C** (572°F)
- Designed for PLA, ABS, PETG, PC, TPU, ASA
PC/ABS, Nylon, GF Nylon, CF Nylon
- Easy Assembly, Leveling, and Print Operation

Max Print Volume

25,650 Cubic cm (cm³) (1565 Cubic Inches)

- X Dimension: 300 mm (11.8 Inches)
- Y Dimension: 225 mm (8.9 Inches)
- Z Dimension: 380 mm (15.0 Inches)

CR-5 Pro H
26,300 cm³

380 mm
300 mm
225 mm

Print Volume

Industrial Grade Customer Support

- Warranty & Repair Support
- Replacement Parts in Stock
- Technical Support & Consulting



Enhance Speed and Performance with Creality Sonic Pad Klipper Interface (Sold Separately)

Creality Sonic Pad

Industrial Grade Applications

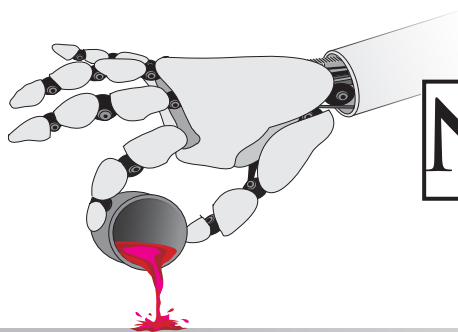
- What ifs...
- Prototypes
- Test Fixtures
- Production Fixtures
- Packaging Evaluations
- Product Shape Alternatives
- Finished Goods Production

Under \$1,400
Ask for a Quote

sales@neocrucible.com

www.neocrucible.com ● 4769 E Wesley Drive ● Anaheim CA 92807 ● (888) 831-9336

Creality Authorized USA Distributor and Repair Facility



NEO CRUCIBLE

3D Printers for Industry

A Division of Lodestone Group

CR-5 Pro H Specifications

File Transfer via SD Card

Master Process Chip: ATMEGA 2560

Whisper Quiet for Office Environments

Power Loss-Recovery ● Filament Run-Out Sensor

4.3 Color Touch Screen ● Touch Auto Bed Leveling

Power Supply Rating: 115/230 Volts AC - 24 Volts DC

Printer Size: 530 x 487 x 612 mm (20.8 x 19.2 x 24.1 Inches)

Shipping Carton: 624 x 545 x 780 mm (24.6 x 21.5 x 30.7 Inches)

Gross Weight: 40 Kg (80 lbs) ● Net Weight: 32.5 Kg (70.5 lbs)

Print Nozzle Diameter: 0.4 mm ● Filament Diameter: 1.75 mm

Max Print Temperature: 300°C ● Max Hot Bed Temp: 110°C (230°F)

Layer Thickness: 0.1 to 0.3 mm (.008 inches) ● Print Accuracy: +/- 0.1 mm

Printer Speed: Up to 60mm/s - Increase Print Speed 5X with **Sonic Pad** Interface (Sold Separately)



Neo Crucible

Filament Characteristics

	Group 1 Filaments		Group 2 Filaments			Group 3 Filaments				
Brand Material	Creality CR-PLA	Creality CR-TPU	Creality CR-PETG	Creality ABS	PolyLite ASA	PolyMax PC	PolyMax PC-FR	PolyMide PC/ABS	PolyMide Nylon 6/6	PolyMide PA6-GF
Description	Versatile	Flexible	Versatile	Strong	Strong	Useful	Special	Tough	Tough	Tough
Colors	Many	Many	Many	Some	Some	Limited	Limited	Limited	Limited	Gray
Ease of Use	9	8	7	6	5	5	5	5	5	4
Print Temp	>190°C	>210°C	>230°C	>250°C	>250°C	>260°C	<260°C	>260°C	>280°C	>280°C
Durability	4	7	5	4	3	9	8	10	8	10
Heat Resist	3	2	6	7	7	8	8	8	9	10
Rigidness	5	1	5	6	7	7	9	7	7	10
Weather	3	7	4	4	9	5	5	5	4	4
						Reinforced	UL94-VO	Blend		Glass Fill

Creality Pro Line-Up

Ask for Volume Discounts

K1

Print Volume
12,100 cm³

Up To
300°C

K1 Max

Print Volume
27,000 cm³

Up To
300°C

CR-3040 Pro

Print Volume
36,000 cm³

Up To
280°C

CR-5060 Pro

Print Volume
150,000 cm³

Up To
300°C

www.neocrucible.com ● 4769 E Wesley Drive ● Anaheim CA 92807 ● (888) 831-9336

Creality Authorized USA Distributor and Repair Facility